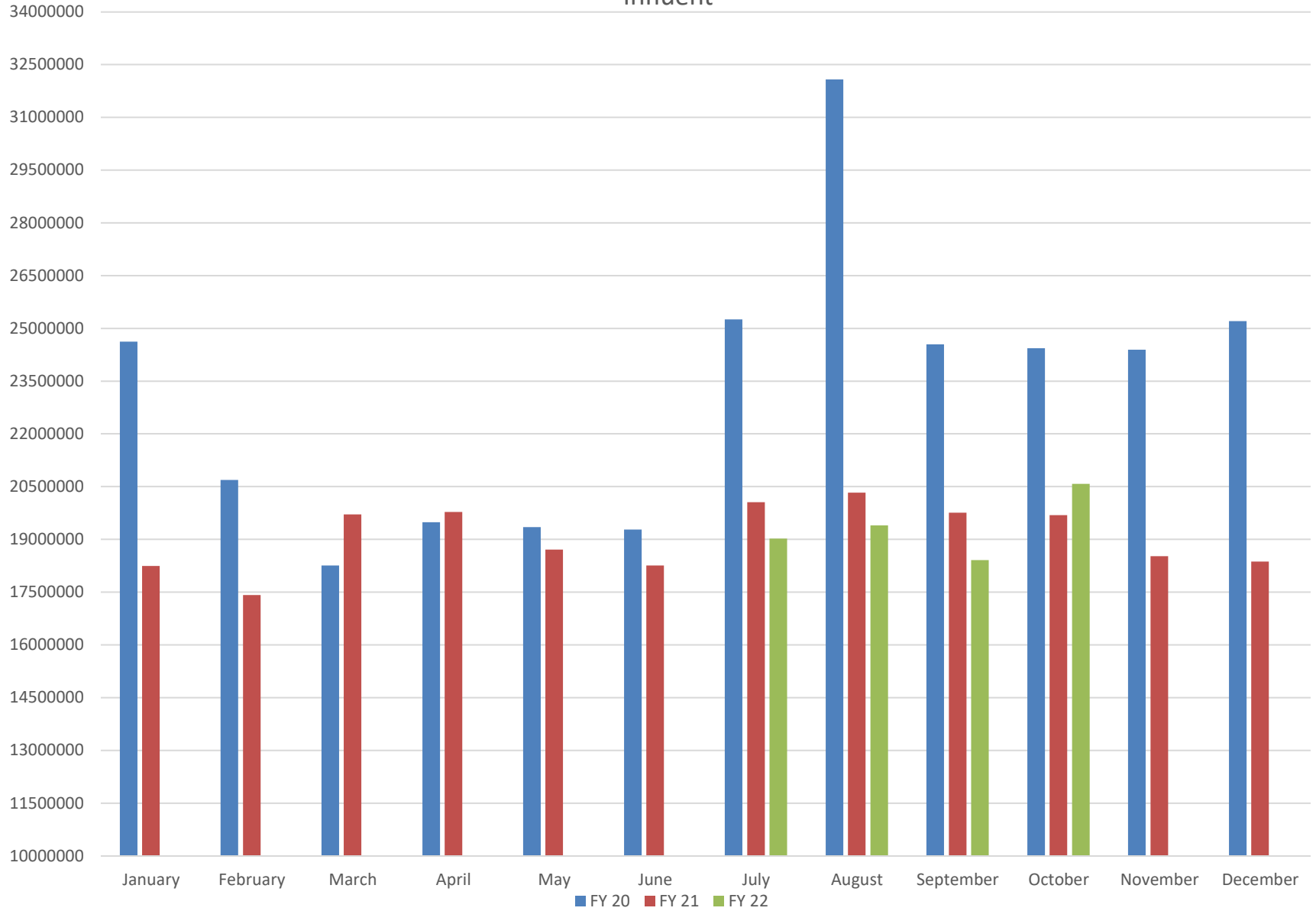
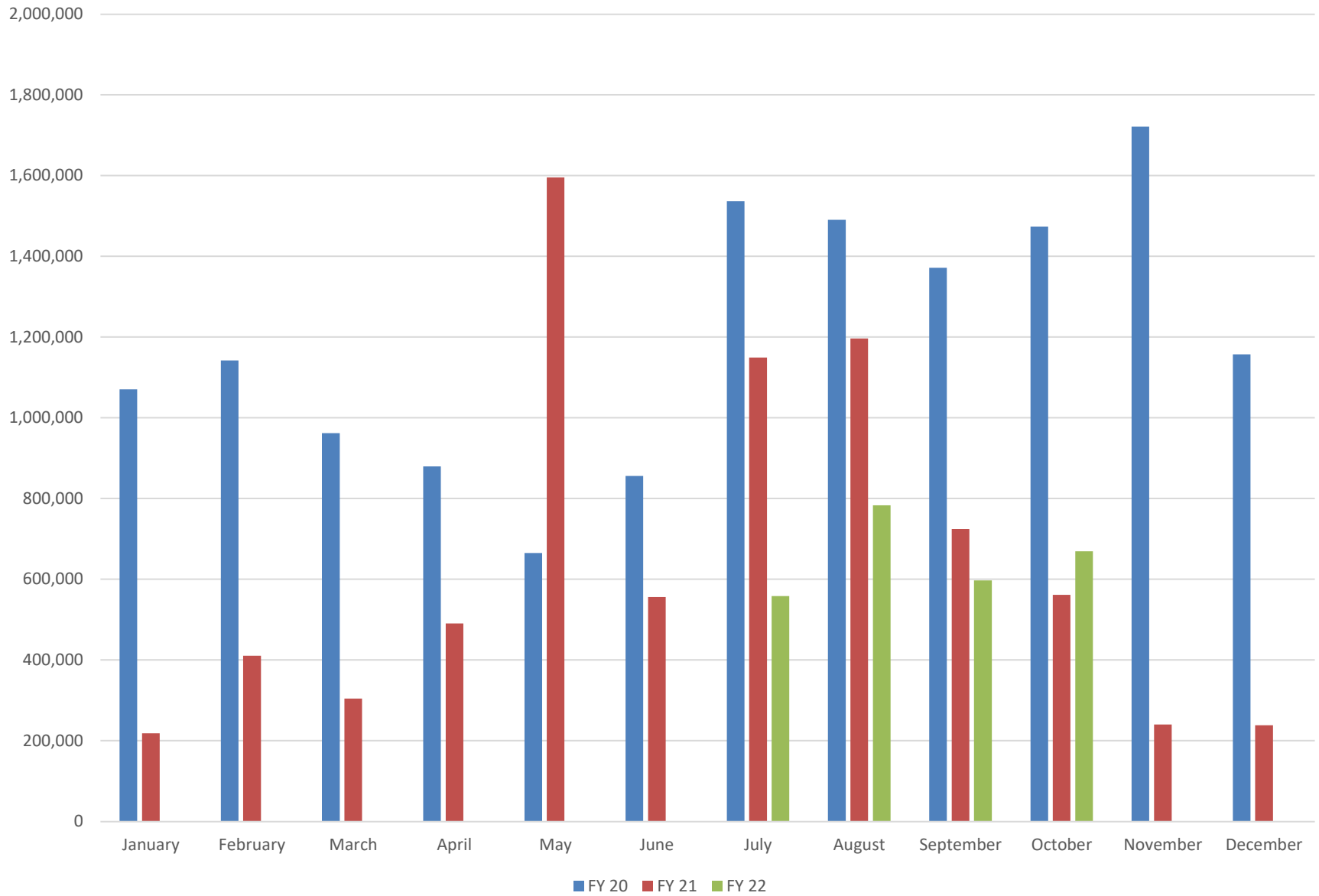


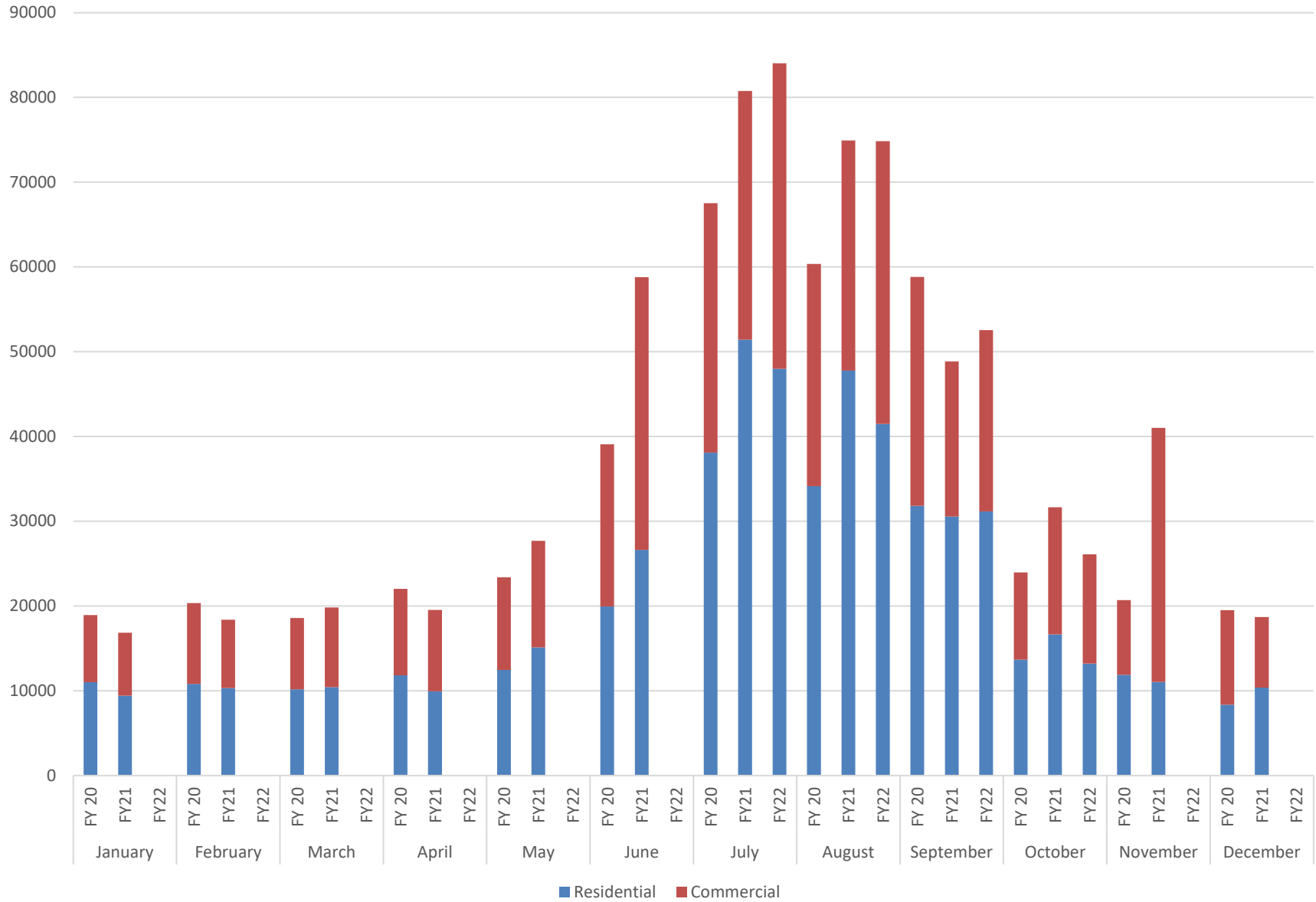
Influent



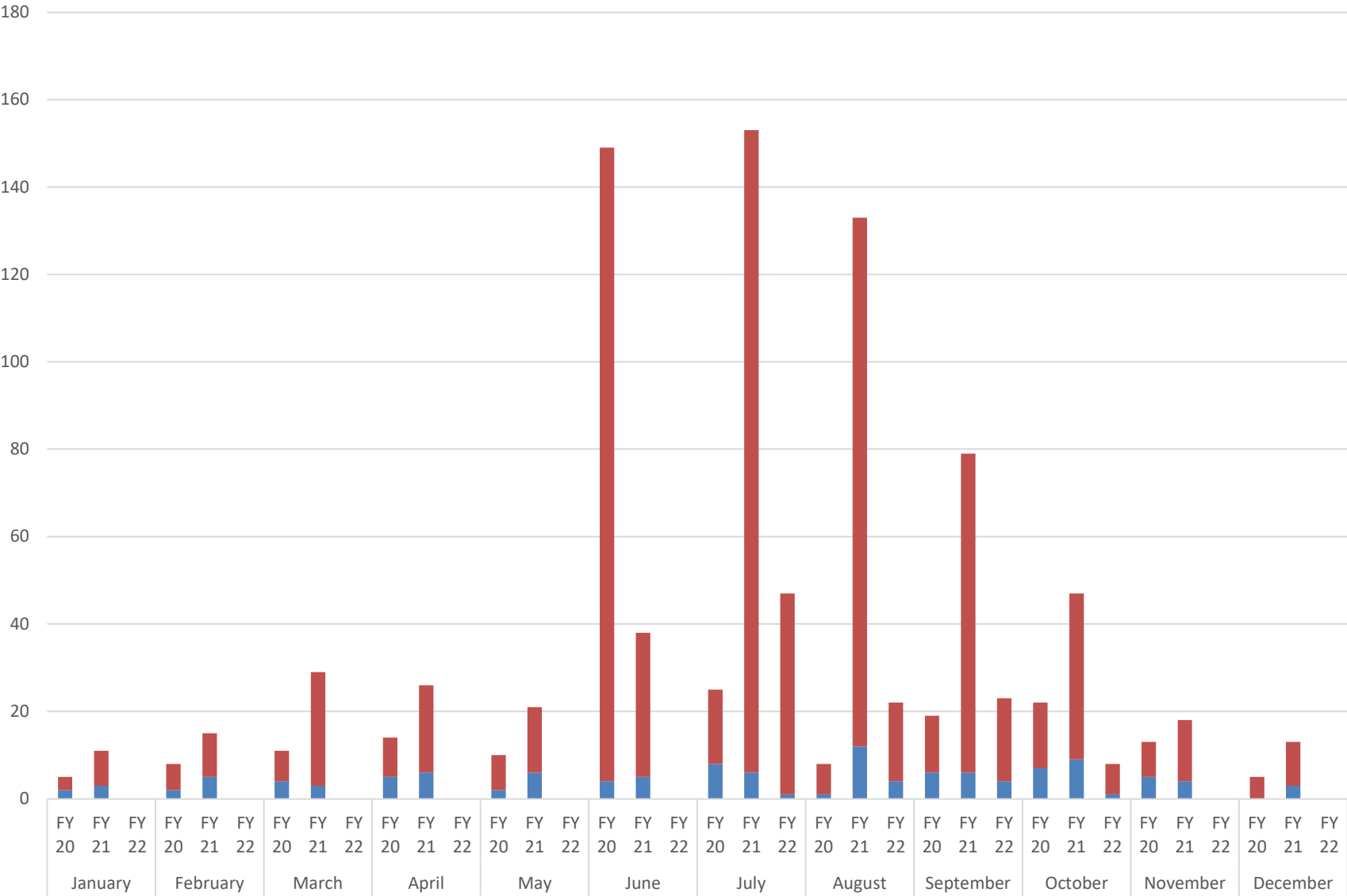
Bulk Water



Water Usage

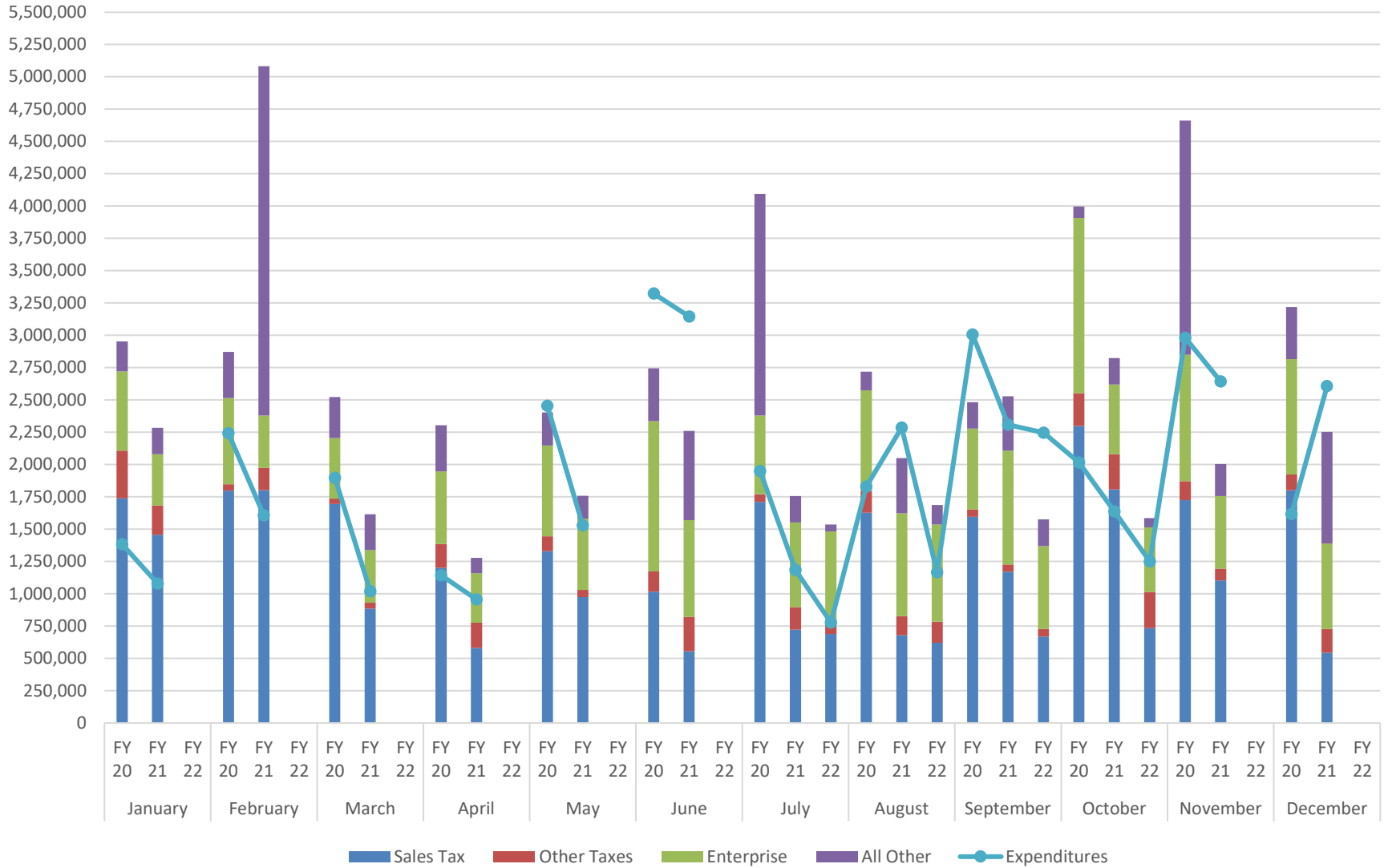


Building Permits



■ Commercial ■ Residential

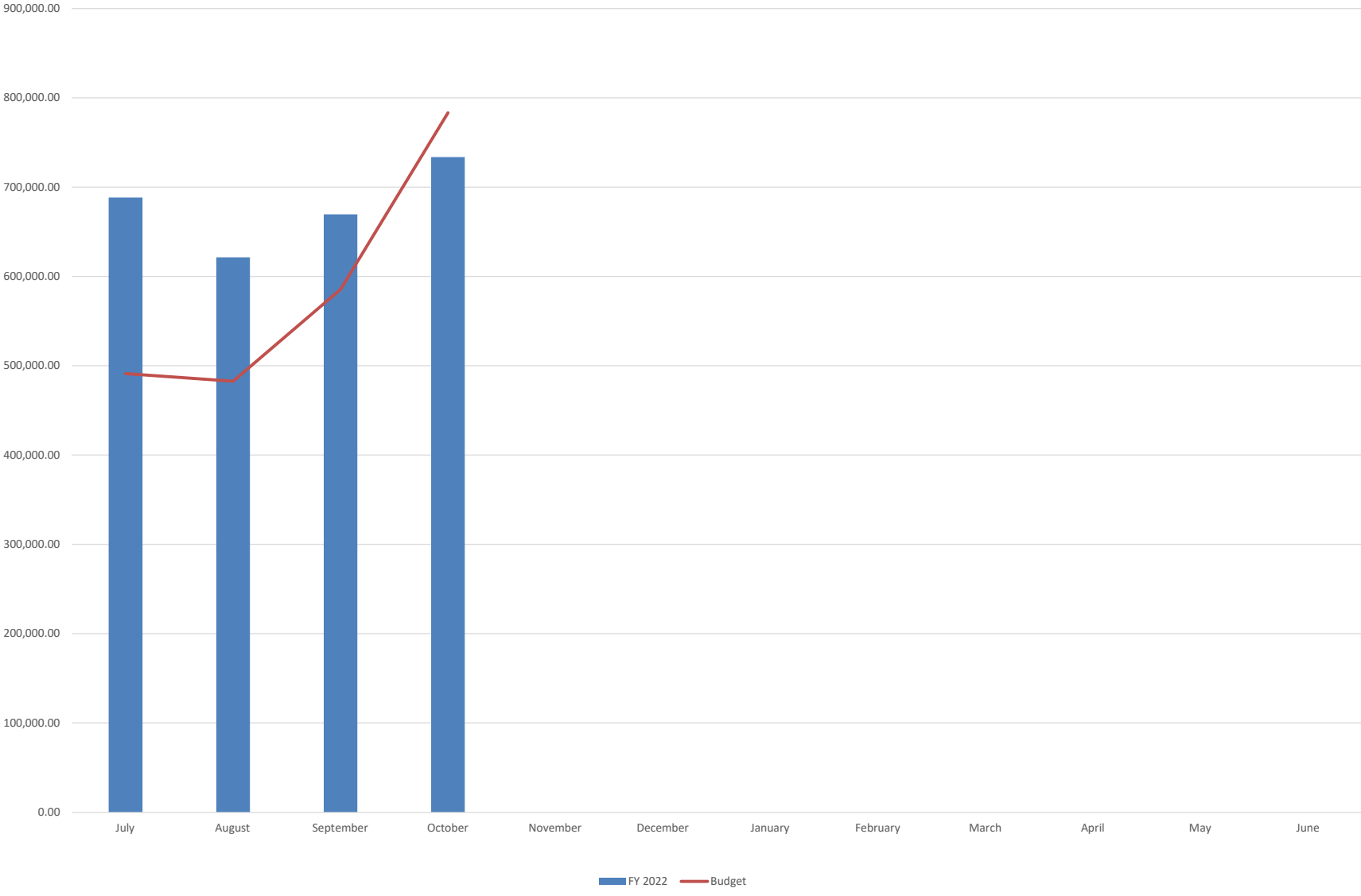
Revenue vs Expenditure



Other Taxes: Property, Supplemental, Severance, Mineral Royalties, Lottery, Fuel, Cigarette
 Enterprise: Water, Sewer, Sanitation, Landfill including any grants related to these funds

Sales Tax								Using Average % of Previous Years			Using Equal Monthly Budget		
	Average Percent	FY 2018	FY 2019	FY 2020	FY 2021	FY 2022	Percent Collected	Budget	FY 22 Variance	Total Variance	FY 22 Budget	FY 22 Variance	Total Variance
July	6.55%	561,366.22	1,021,893.34	1,709,699.37	721,591.20	688,361.30	9.18%	491,214.94	197,146.36	197,146.36	625,000.00	63,361.30	63,361.30
August	6.44%	548,589.29	1,094,910.08	1,626,878.43	678,770.04	621,431.06	8.29%	482,858.12	138,572.94	335,719.30	625,000.00	-3,568.94	59,792.36
September	7.81%	622,994.47	1,247,587.07	1,594,767.92	1,170,188.21	669,516.03	8.93%	585,549.34	83,966.69	419,685.98	625,000.00	44,516.03	40,947.09
October	10.44%	771,265.20	1,305,379.57	2,296,980.54	1,806,775.31	733,754.65	9.78%	783,079.16	-49,324.51	370,361.47	625,000.00	108,754.65	153,270.68
November	8.92%	930,818.16	1,479,582.91	1,724,595.19	1,102,857.50								
December	7.54%	836,754.32	1,400,629.35	1,802,303.16	543,590.26								
January	10.47%	1,256,819.57	1,507,523.15	1,737,648.61	1,457,142.64								
February	11.34%	1,388,985.44	1,366,128.17	1,797,478.50	1,801,333.29								
March	8.24%	876,220.31	1,434,928.23	1,693,940.64	885,536.12								
April	6.65%	747,852.31	1,414,567.29	1,200,194.07	581,267.92								
May	8.44%	1,031,725.30	1,514,123.16	1,328,466.26	973,485.38								
June	7.17%	1,021,525.71	1,518,495.38	1,015,042.72	554,667.70								
Total		10,594,916.30	16,305,747.70	19,527,995.41	12,277,205.57	2,713,063.04	36.17%	7,500,000.00	370,361.47		7,500,000.00	213,063.04	
Month Average		882,909.69	1,358,812.31	1,627,332.95	1,023,100.46	678,265.76							

Sales Tax Actual to Budget



Sales Tax History

