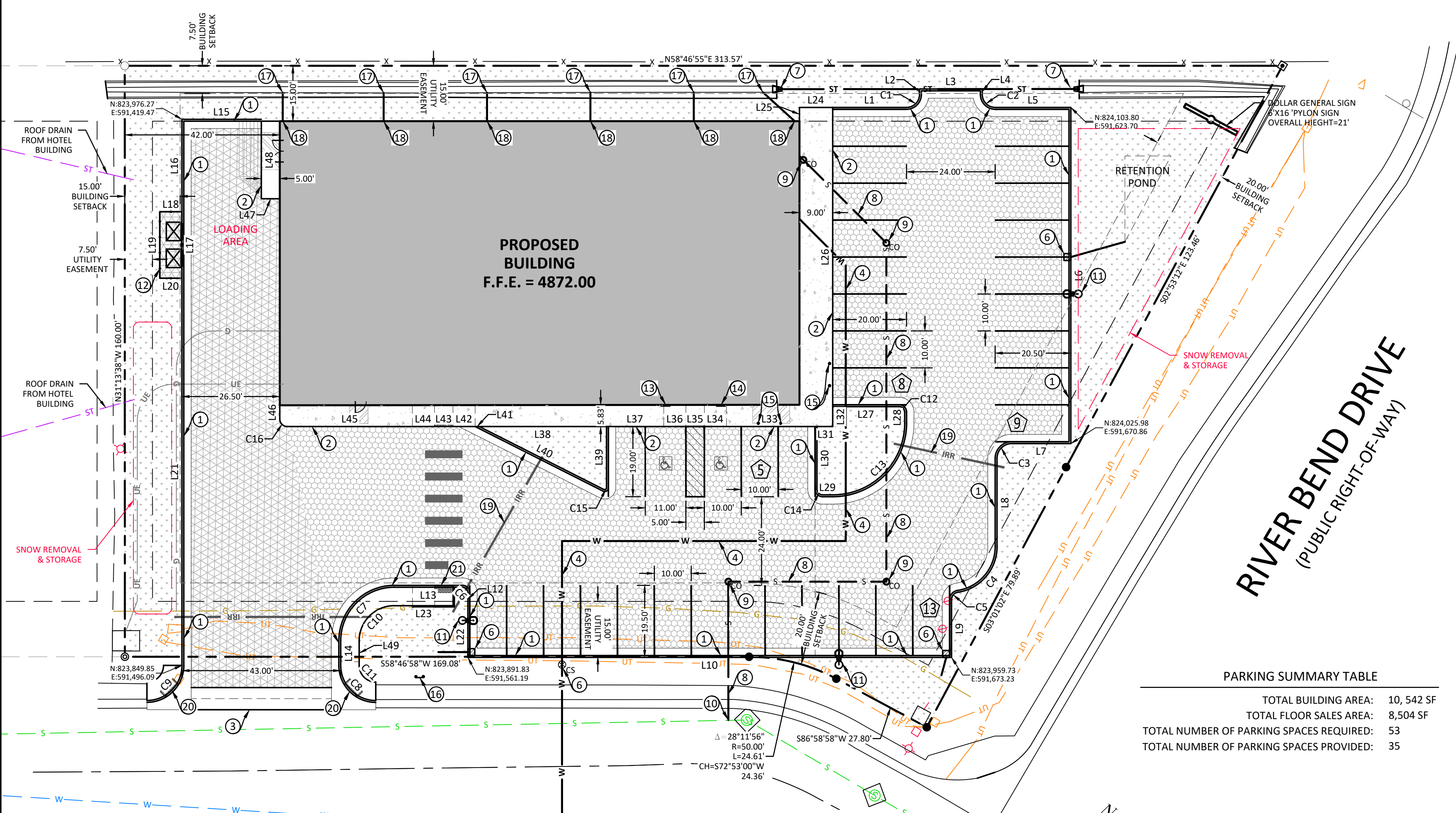


# I-25 OFF RAMP (WIDTH VARIES - PUBLIC RIGHT-OF-WAY)



CURVE TABLE					
CURVE #	RADIUS	DELTA	LENGTH	CHORD BEARING	CHORD LENGTH
C1	3.50'	90°00'00"	5.50'	N 13°46'55" E	4.95'
C2	3.50'	90°00'00"	5.50'	S 76°13'05" E	4.95'
C3	4.00'	90°00'00"	6.28'	S 13°46'55" W	5.66'
C4	12.50'	81°20'55"	17.75'	S 09°27'22" W	16.29'
C5	2.00'	81°20'55"	2.84'	S 09°27'22" W	2.61'
C6	1.50'	90°03'01"	2.36'	N 76°14'36" W	2.12'
C7	14.50'	89°57'02"	22.76'	S 13°45'26" W	20.50'
C8	9.50'	89°56'41"	14.91'	S 76°11'26" E	13.43'
C9	9.50'	89°54'10"	14.91'	S 13°43'59" W	13.42'
C10	9.50'	89°57'02"	14.91'	S 13°45'26" W	13.43'
C11	4.50'	89°56'41"	7.06'	S 76°11'26" E	6.36'
C12	1.50'	90°00'00"	2.36'	S 76°13'05" E	2.12'
C13	19.50'	90°00'00"	30.63'	S 13°46'55" W	27.58'
C14	1.50'	90°00'00"	2.36'	N 76°13'05" W	2.12'
C15	0.50'	116°47'20"	1.02'	S 27°10'35" W	0.85'
C16	2.00'	89°59'54"	3.14'	N 76°13'08" W	2.83'

LINE TABLE		
LINE #	DIRECTION	LENGTH
L1	N 58°46'55" E	20.00'
L2	N 31°13'05" W	1.50'
L3	N 58°46'55" E	17.00'
L4	S 31°13'05" E	1.50'
L5	N 58°46'55" E	20.50'
L6	S 31°13'05" E	91.00'
L7	S 58°46'55" W	16.00'
L8	S 31°13'05" E	23.89'
L9	S 31°13'05" E	15.65'
L10	S 58°46'55" W	131.00'
L11	N 31°10'48" W	3.50'
L12	S 58°43'57" W	18.45'
L13	S 31°13'05" E	6.67'
L14	S 58°46'55" W	21.50'
L15	S 31°13'05" E	25.02'
L16	S 31°13'05" E	18.00'
L17	S 58°46'52" W	6.00'
L18	S 58°46'52" W	6.00'
L19	S 31°13'08" W	18.00'
L20	N 58°46'52" E	6.00'
L21	S 31°13'05" E	104.80'
L22	N 31°13'40" W	14.00'
L23	S 58°43'57" W	15.95'
L24	S 58°46'55" W	9.00'
L25	S 31°13'05" E	3.71'
L26	S 31°13'05" E	81.00'

LINE TABLE		
LINE #	DIRECTION	LENGTH
L27	N 58°46'55" E	18.00'
L28	S 31°13'05" E	2.88'
L29	S 58°46'55" W	2.76'
L30	N 31°13'05" W	17.00'
L31	N 58°46'55" E	4.26'
L32	N 31°13'05" W	5.38'
L33	S 58°46'55" W	24.50'
L34	S 58°46'55" W	6.00'
L35	S 58°46'55" W	5.00'
L36	S 58°46'55" W	6.00'
L37	S 58°46'55" W	15.50'
L38	S 58°46'55" W	34.48'
L39	S 31°13'05" E	16.60'
L40	S 85°34'15" W	37.82'
L41	S 58°46'55" W	1.11'
L42	S 58°46'55" W	6.00'
L43	S 58°46'55" W	5.00'
L44	S 58°46'55" W	6.00'
L45	S 58°46'55" W	33.91'
L46	N 31°13'11" W	3.75'
L47	S 58°46'55" W	5.00'
L48	N 31°13'05" W	21.00'
L49	S 31°13'05" E	6.67'

PARKING SUMMARY TABLE	
TOTAL BUILDING AREA:	10,542 SF
TOTAL FLOOR SALES AREA:	8,504 SF
TOTAL NUMBER OF PARKING SPACES REQUIRED:	53
TOTAL NUMBER OF PARKING SPACES PROVIDED:	35

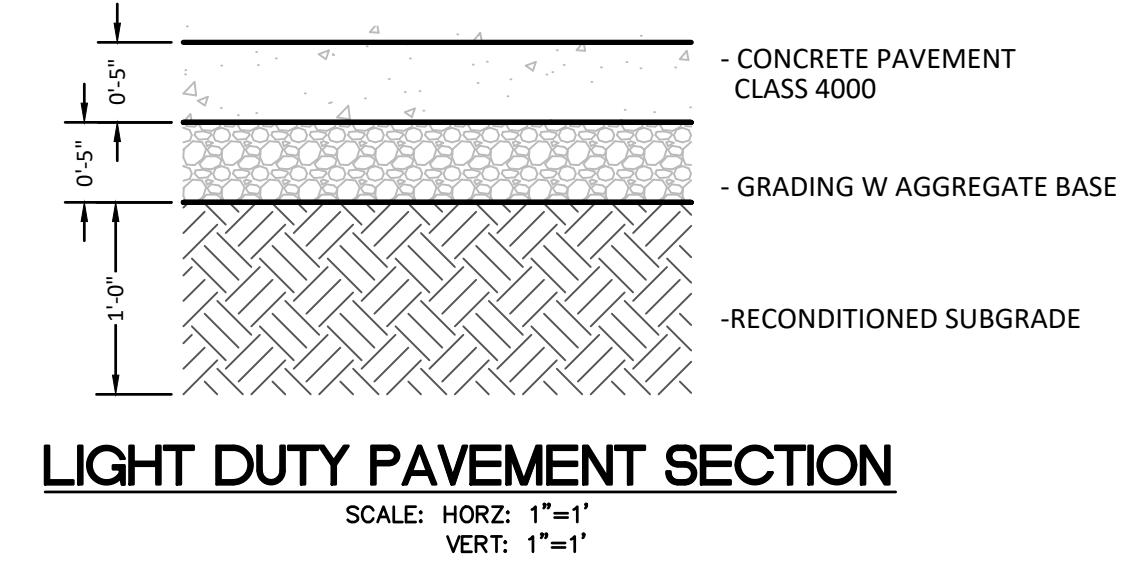
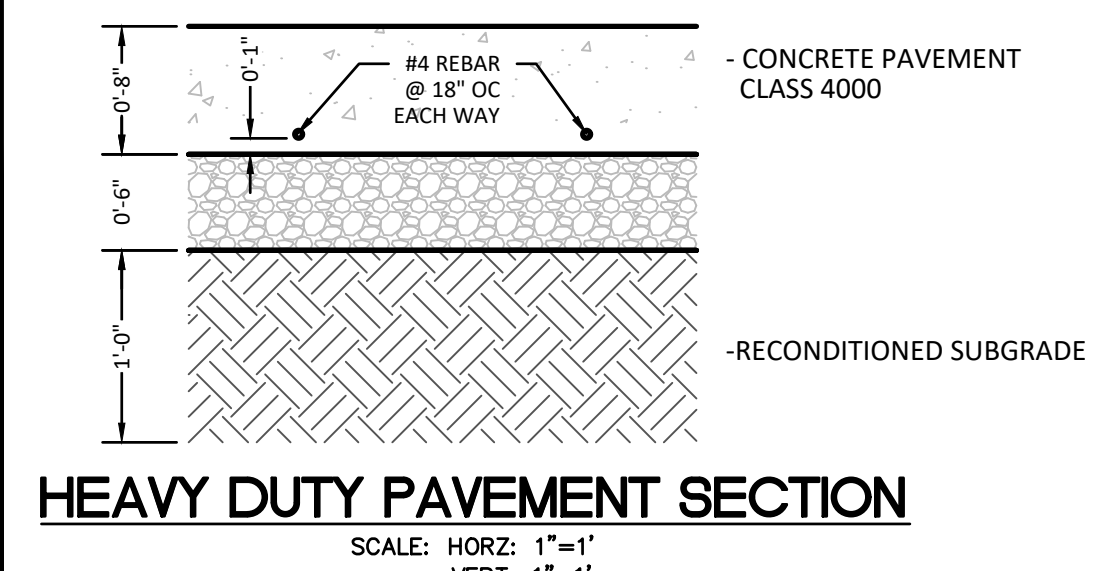
**LEGEND:**

- LIGHT DUTY PAVEMENT  
5" CONCRETE PAVEMENT  
5" WYDOT GRADING W BASE  
12" RECONDITIONED SUBGRADE  
10'X10' MAXIMUM JOINTS, SEAL ALL JOINTS
- HEAVY DUTY PAVEMENT  
8" CONCRETE PAVEMENT  
6" WYDOT GRADING W BASE  
12" RECONDITIONED SUBGRADE  
#4 REBAR @ 18" O.C. EACH WAY  
15'X15' MAXIMUM JOINTS, SEAL ALL JOINTS
- SIDEWALK  
4" PORTLAND CEMENT CONCRETE  
4" BASE COURSE  
6'X6' MAXIMUM JOINTS, SEAL ALL JOINTS
- SIDEWALK @ DOORS  
4" PORTLAND CEMENT CONCRETE  
48" BASE COURSE  
(6.0' X 6.0' MIN.)
- LANDSCAPE  
REFER TO LANDSCAPE PLANS

- CONSTRUCTION NOTES:**
- INSTALL TYPE-A CURB & GUTTER PER DETAIL ON SHEET C6.1.
  - INSTALL THICKEN EDGE SIDEWALK PER DETAIL ON SHEET C6.1.
  - INSTALL 6-FT WIDE VALLEY GUTTER PER DETAIL ON SHEET C6.1.
  - INSTALL 1-INCH WATER SERVICE LINE PER DETAILS ON SHEET C6.2.
  - CONNECT WATER LINE TO EXISTING CURB STOP. ADJUST CURBSTOP TO FINISHED GRADE. CONTRACTOR TO VERIFY LOCATION.
  - INSTALL TYPE-X INLET. (RE: C4.1)
  - INSTALL 15-INCH HDPE CULVERT WITH CMP FLARED ENDS. (RE: C4.1)
  - INSTALL 4-INCH SANITARY SEWER SERVICE PER DETAIL ON SHEET C6.1.
  - INSTALL DOUBLE CLEANOUT PER DETAIL ON SHEET C6.1.
  - LOCATE EXISTING SANITARY SEWER SERVICE AND CONNECT TO PROPOSED SEWER SERVICE.
  - INSTALL LIGHT POLE & LUMINARIES BY USLED. SEE PHOTOMETRIC PLAN BY LEDS-LLC.
  - INSTALL TRASH ENCLOSURE WOOD WALL PER DETAIL ON SHEET C6.3.
  - INSTALL VAN HANDICAP PARKING SIGN PER DETAIL ON SHEET C6.2.
  - INSTALL HANDICAP PARKING SIGN PER DETAIL ON SHEET C6.2.
  - INSTALL BOLLARD PER DETAIL ON SHEET C6.2.
  - INSTALL TEMPORARY ADDRESS SIGN.
  - INSTALL 6-INCH HDPE STORM SEWER AT 1.0% MINIMUM SLOPE.
  - CONNECT ROOF DRAINS TO STORM SEWER.
  - INSTALL 2-INCH PVC IRRIGATION SLEEVE
  - INSTALL SINGLE PAIR PARALLEL RAMP PER DETAIL ON SHEET C6.3.
  - INSTALL CURB RAMP TYPE-III PER DETAIL ON SHEET C6.3.

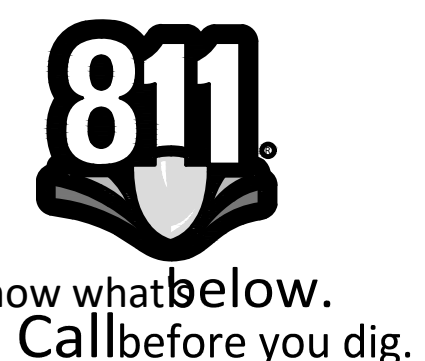
- GENERAL NOTES:**
- ALL DIMENSION ON CURB ARE TO BACK OF CURB UNLESS OTHERWISE NOTED
  - SAWCUT JOINTS SHALL HAVE A MAXIMUM WIDTH OF 1/4 INCH AND BE CUT AT LEAST 1/4 OF THE DEPTH OF THE CONCRETE. ALL SITE CONCRETE SHALL BE CLASS 4000.
  - ALL BASE COARSE AND EARTHWORK FILL SHALL BE COMPACTED TO 95% MAXIMUM DRY DENSITY AS DETERMINED BY AASHTO T-99 (STANDARD PROCTOR)
  - ALL SITE WORK SHALL CONFORM TO WYOMING PUBLIC WORKS STANDARD SPECIFICATIONS AND STANDARD DRAWINGS, 2015 EDITION
  - PROPOSED GAS, ELECTRIC, AND COMMUNICATION LINES ARE SHOWN FOR REFERENCE ONLY. ACTUAL PLACEMENT AND SERVICE POINTS WILL BE DETERMINED BY THE UTILITY OWNER BASE ON THEIR REQUIREMENTS AND AVAILABILITY.

## MUIRFIELD COURT (60' PUBLIC RIGHT-OF-WAY)



STRIPING LEGEND	
YELLOW CURBING AND BOLLARDS - PARKING LOT	SURFACES SHOULD BE CLEAN, DRY AND METAL SURFACES FREE OF HEAVY RUST. 2 COATS SHERWIN WILLIAMS - REM 4000 ACRYLIC ALKYD ENAMEL SAFETY YELLOW B55Y300
STRIPING - PARKING LOT	SURFACES SHOULD BE CLEAN AND DRY. PROMAR TRAFFIC MARKING PAINT YELLOW TM5495
HANDICAP STRIPING - PARKING LOT	SURFACES SHOULD BE CLEAN AND DRY. PROMAR TRAFFIC MARKING PAINT YELLOW TM5495

NOTE: IF PARKING LOT PAVING IS CONCRETE, ADD 4" WIDE SAFETY YELLOW STRIPE AT EDGE OF ALL SIDEWALK BORDERING PAVEMENT.



**SITE PLAN SUBMITTAL SET  
NOT FOR CONSTRUCTION  
7/18/2022**

REVISIONS				
NO.	DESCRIPTION	DATE	BY	CKD

Any use, reuse, or CADD adaptation of this drawing other than for the specific purpose intended, by anyone, without written authorization from the engineer, will be at the Client's risk and full legal responsibility.

**INBERG-MILLER ENGINEERS**  
124 East Main Street | 1120 East C Street | 350 Parsley Boulevard | 193 West Flaming Gorge Way | 804 E. Richards St | 1300 East US Hwy 14-16  
Riverton, WY 82501 | Casper, WY 82501 | Cheyenne, WY 82007 | Green River, WY 82505 | Douglas, WY 82533 | Gillette, WY 82718  
307-856-8196 | 307-577-0806 | 307-635-6827 | 307-875-4384 | 307-359-7000 | 307-682-5000

**DOUGLAS - MUIRFIELD DOLLAR GENERAL STORE #24588 PROJECT**  
CAPITAL GROWTH BUCHALTER

**SITE, PAVING, & UTILITY PLAN**

SCALE: HORZ: 1"=20'  
VERT: N/A

DRN. ARC BK: 1320 PAGE: 8,14  
CHK. BRT  
DATE: 7/18/2022 JOB NO. 22586-DE

**SHEET C3.1**