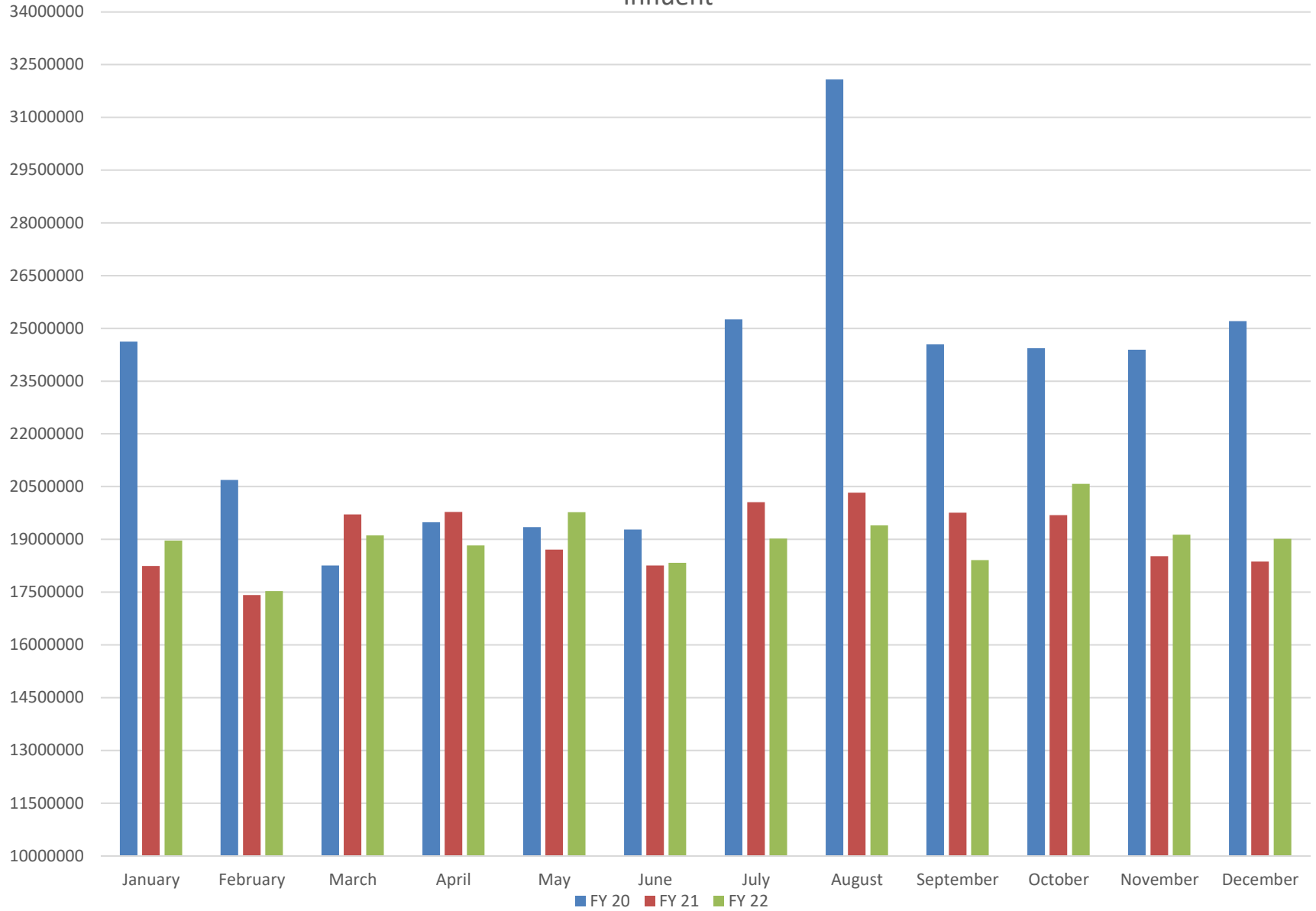
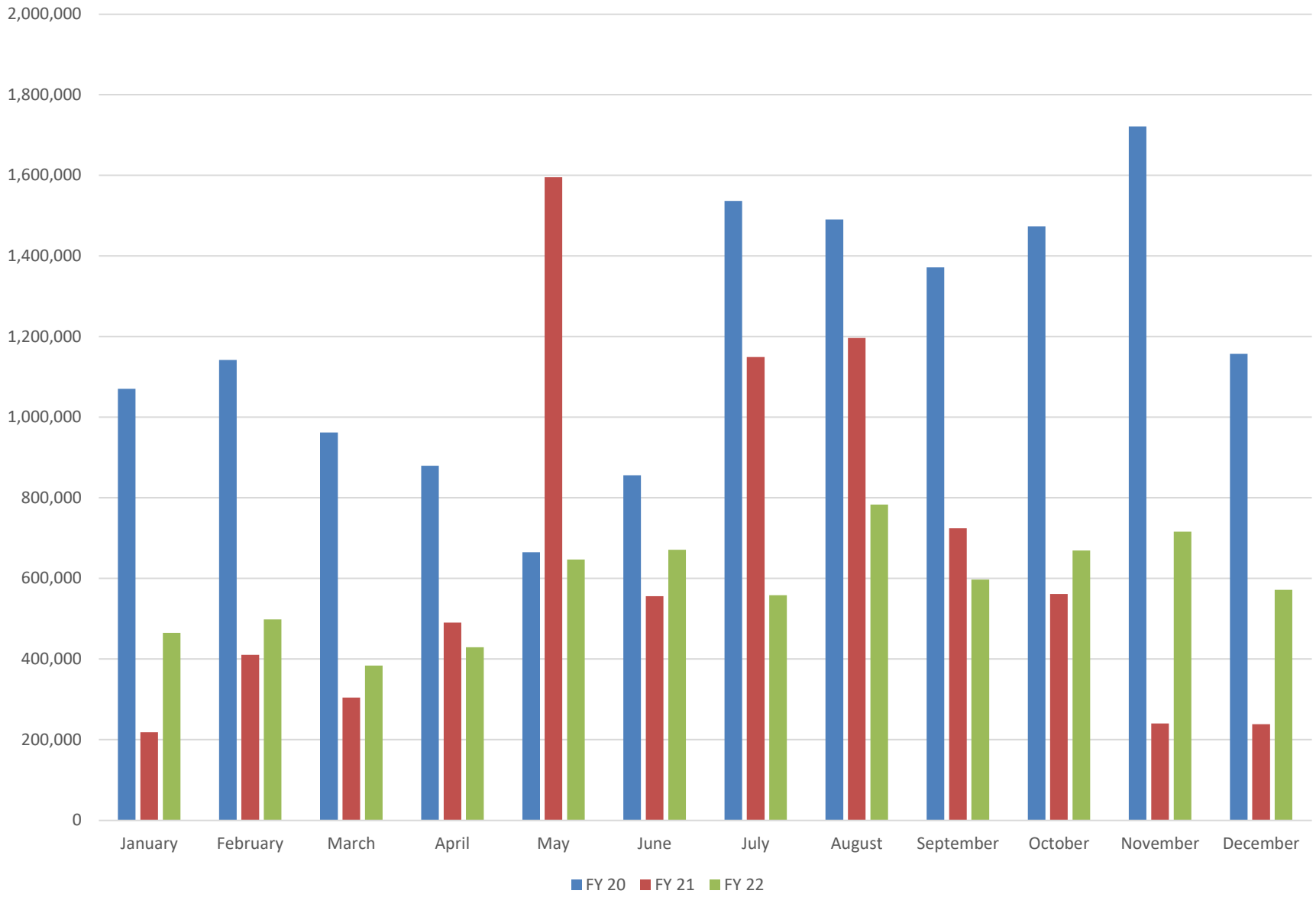


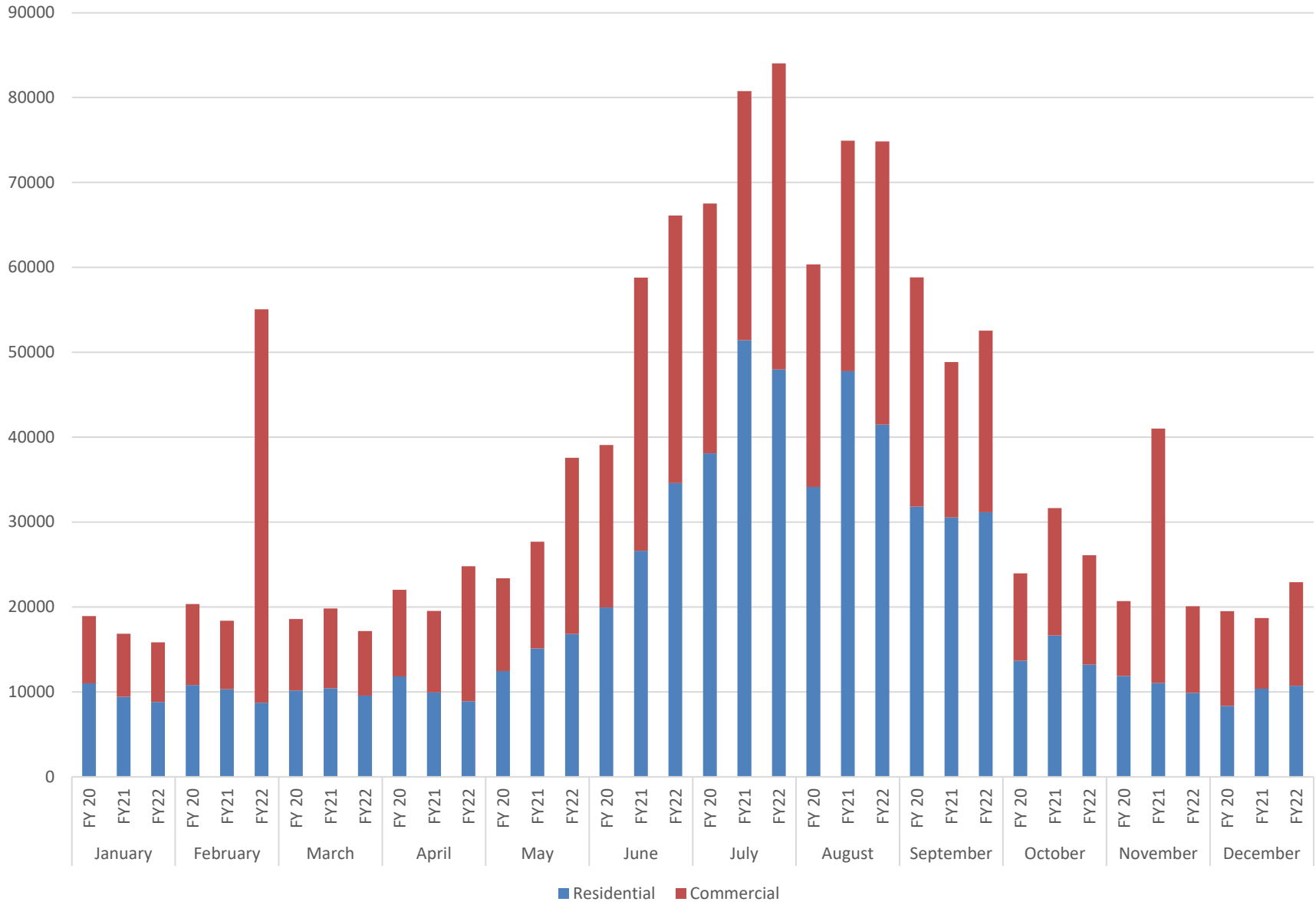
# Influent



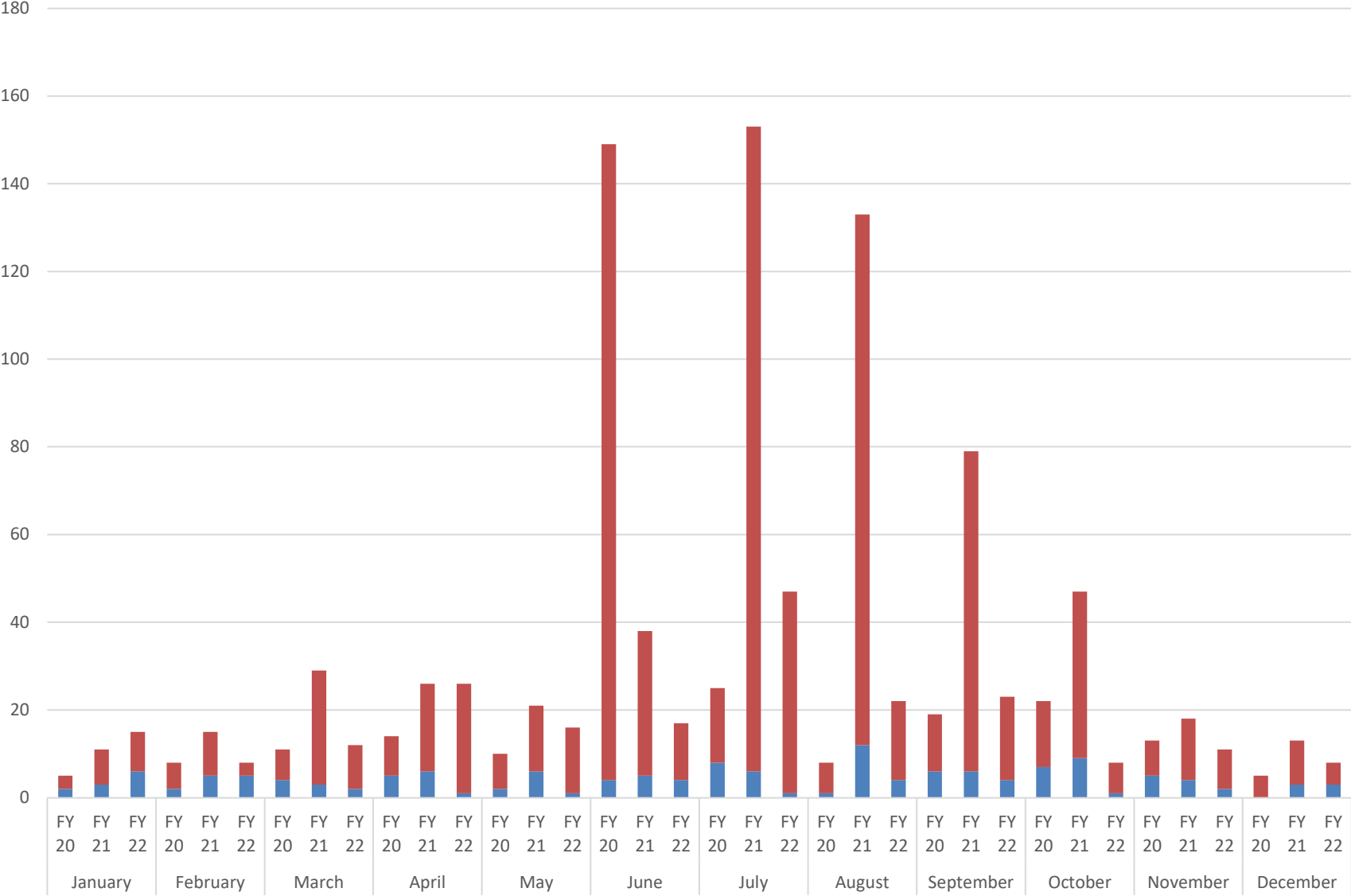
# Bulk Water



# Water Usage



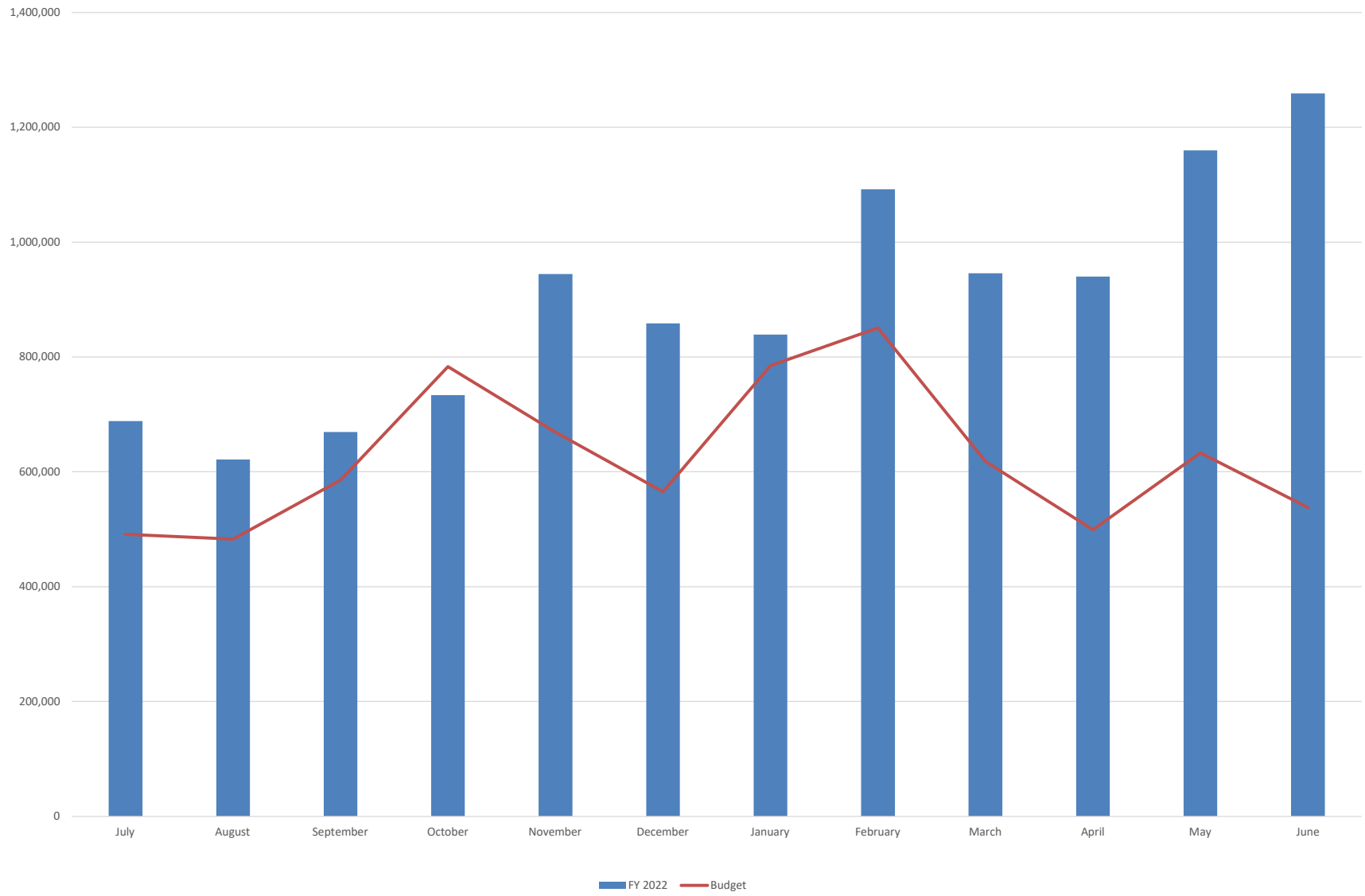
### Building Permits



■ Commercial ■ Residential

Sales Tax								Using Average % of Previous Years			Using Equal Monthly Budget		
	Average Percent	FY 2018	FY 2019	FY 2020	FY 2021	FY 2022	Percent Collected	Budget	FY 22 Variance	Total Variance	FY 22 Budget	FY 22 Variance	Total Variance
July	6.55%	561,366	1,021,893	1,709,699	721,591	688,361	9.18%	491,215	197,146	197,146	625,000	63,361	63,361
August	6.44%	548,589	1,094,910	1,626,878	678,770	621,431	8.29%	482,858	138,573	335,719	625,000	-3,569	59,792
September	7.81%	622,994	1,247,587	1,594,768	1,170,188	669,516	8.93%	585,549	83,967	419,686	625,000	44,516	104,308
October	10.44%	771,265	1,305,380	2,296,981	1,806,775	733,755	9.78%	783,079	-49,325	370,361	625,000	108,755	213,063
November	8.92%	930,818	1,479,583	1,724,595	1,102,858	944,700	12.60%	668,885	275,815	646,176	625,000	319,700	532,763
December	7.54%	836,754	1,400,629	1,802,303	543,590	858,551	11.45%	565,209	293,343	939,519	625,000	233,551	766,314
January	10.47%	1,256,820	1,507,523	1,737,649	1,457,143	839,002	11.19%	785,152	53,850	993,369	625,000	214,002	980,316
February	11.34%	1,388,985	1,366,128	1,797,479	1,801,333	1,092,275	14.56%	850,592	241,683	1,235,052	625,000	467,275	1,447,591
March	8.24%	876,220	1,434,928	1,693,941	885,536	945,710	12.61%	617,955	327,755	1,562,807	625,000	320,710	1,768,302
April	6.65%	747,852	1,414,567	1,200,194	581,268	940,150	12.54%	499,020	441,130	2,003,937	625,000	315,150	2,083,451
May	8.44%	1,031,725	1,514,123	1,328,466	973,485	1,159,826	15.46%	632,922	526,904	2,530,841	625,000	534,826	2,618,278
June	7.17%	1,021,526	1,518,495	1,015,043	554,668	1,259,090	16.79%	537,563	721,527	3,252,368	625,000	634,090	3,252,368
Total		10,594,916	16,305,748	19,527,995	12,277,206	10,752,368	143.36%	7,500,000	3,252,368		7,500,000	3,252,368	
Month Average		882,910	1,358,812	1,627,333	1,023,100	896,031							

Sales Tax Actual to Budget



Sales Tax History

