

# Influent

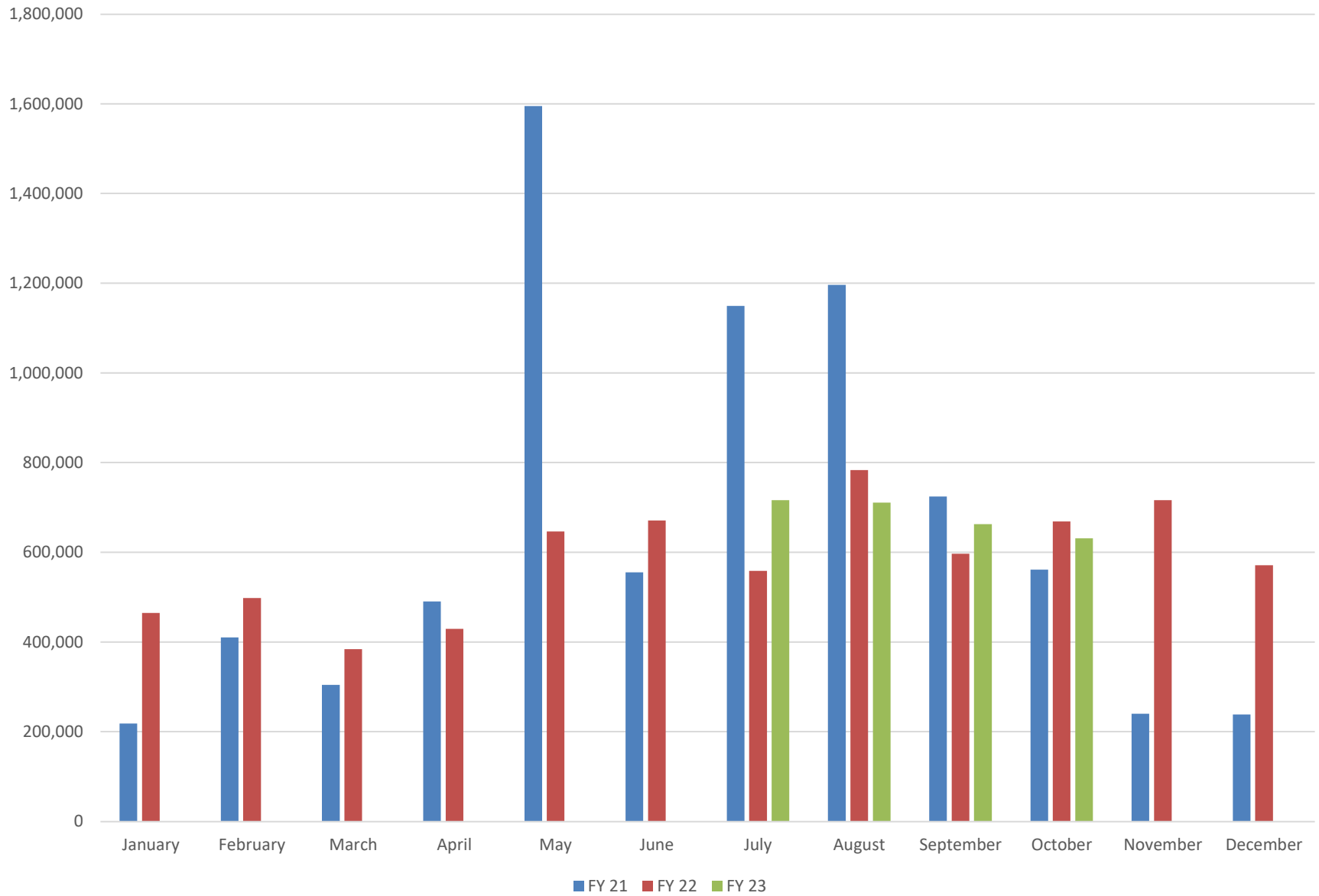
26,500,000  
25,000,000  
23,500,000  
22,000,000  
20,500,000  
19,000,000  
17,500,000  
16,000,000  
14,500,000  
13,000,000  
11,500,000  
10,000,000

January February March April May June July August September October November December

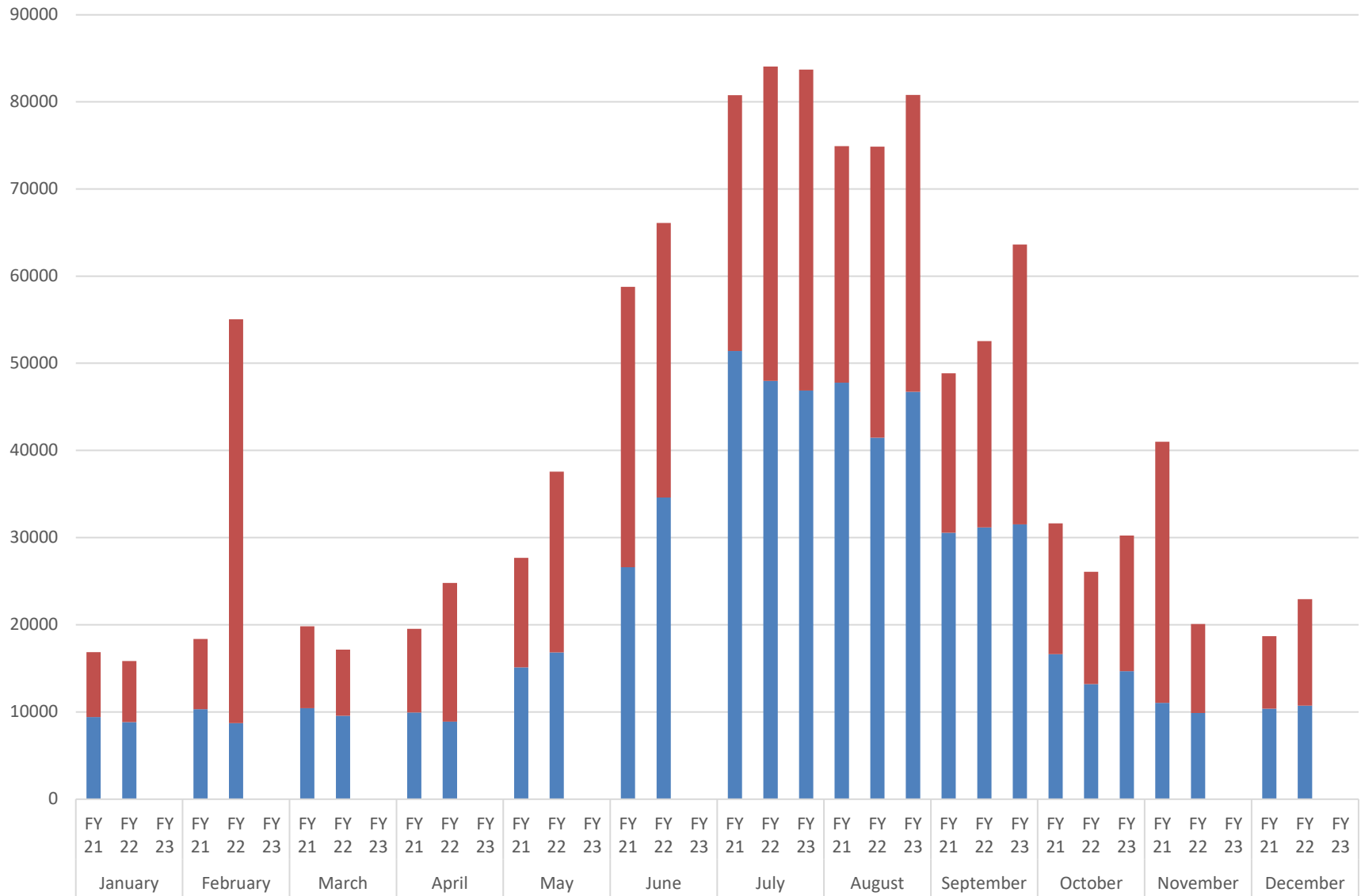
FY 21 FY 22 FY 23



# Bulk Water

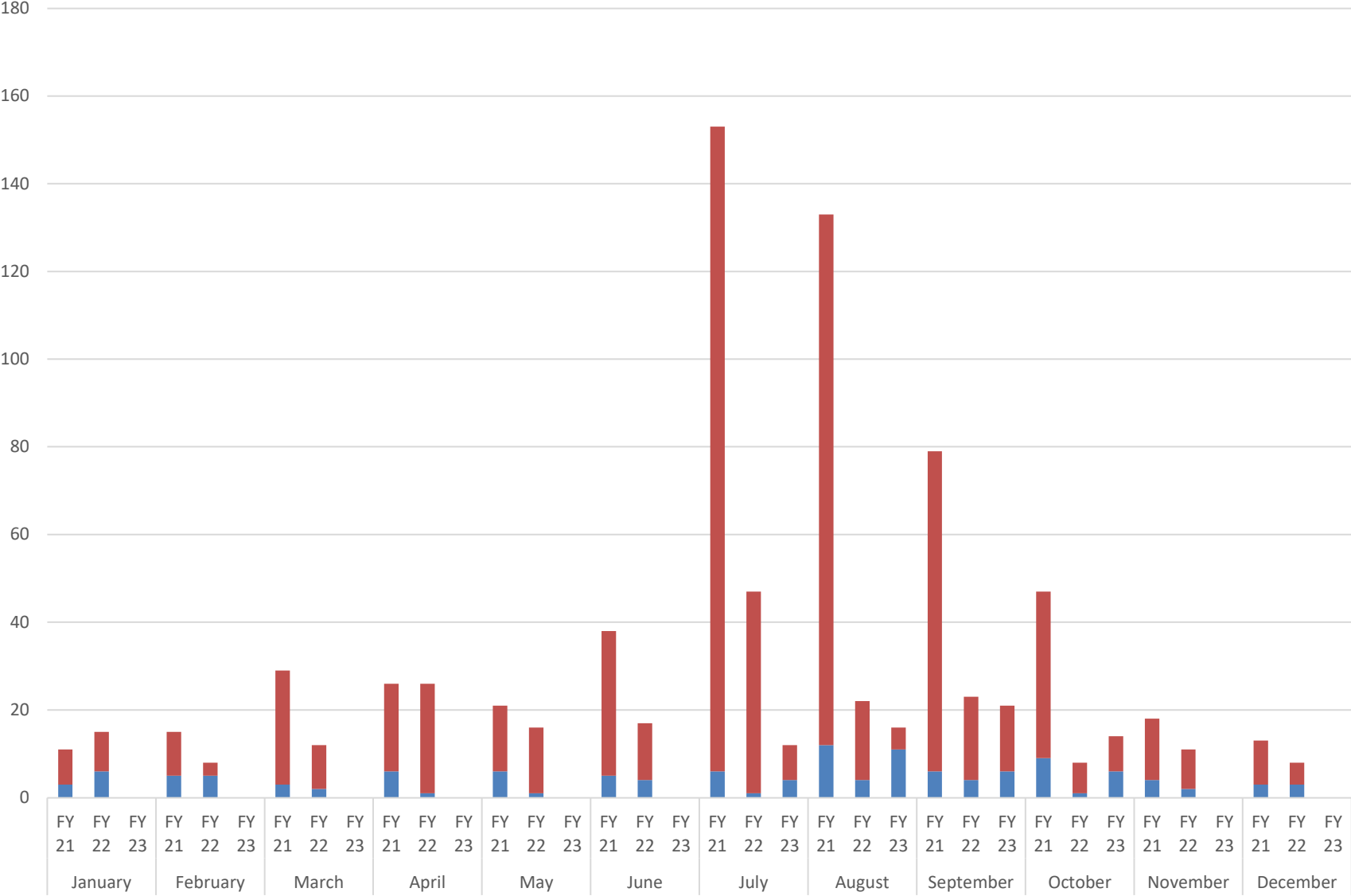


# Water Usage



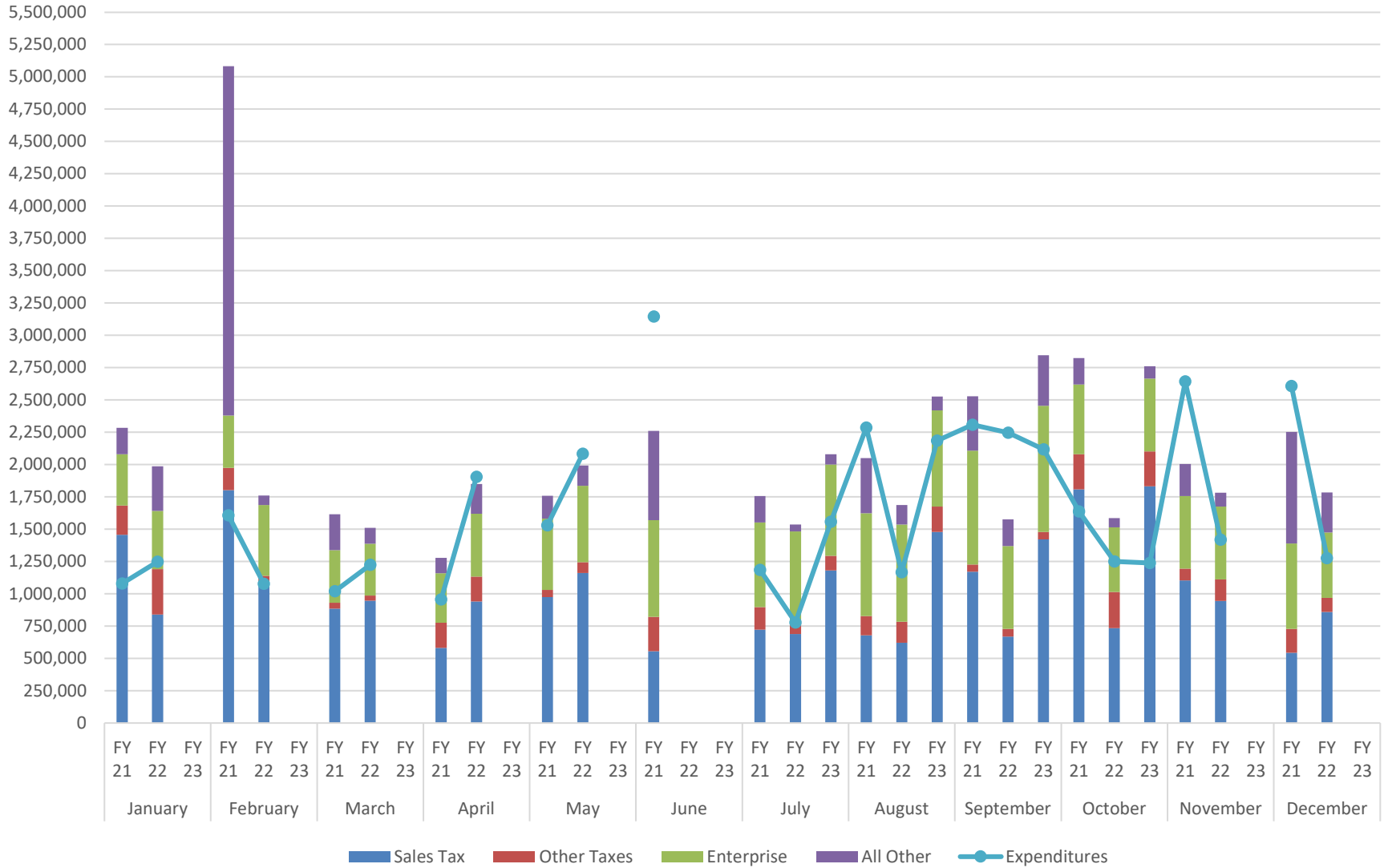
■ Residential ■ Commercial

### Building Permits



■ Commercial ■ Residential

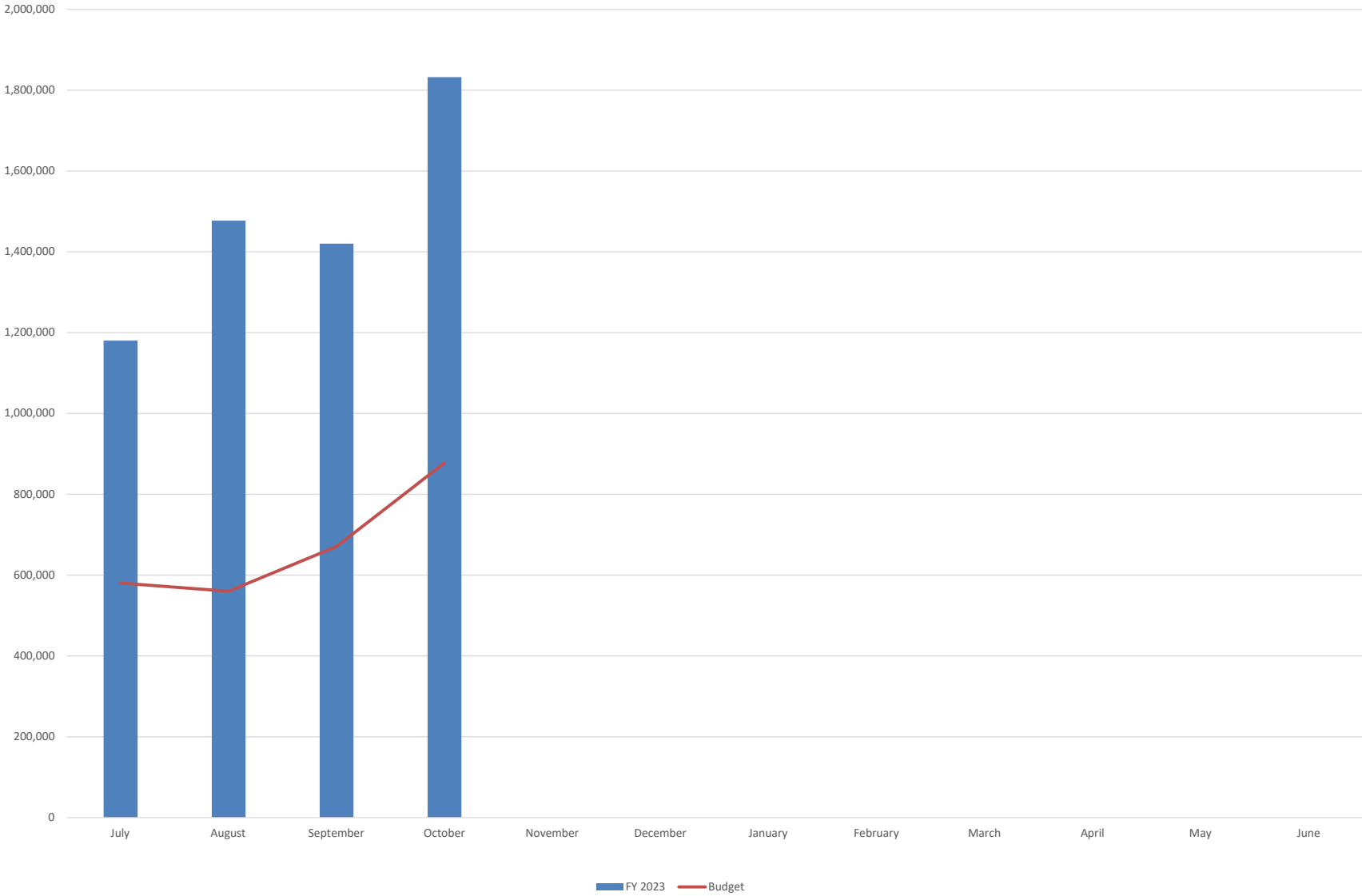
## Revenue vs Expenditure



Other Taxes: Property, Supplemental, Severance, Mineral Royalties, Lottery, Fuel, Cigarette  
 Enterprise: Water, Sewer, Sanitation, Landfill including any grants related to these funds

Sales Tax								Using Average % of Previous Years			Using Equal Monthly Budget		
	Average Percent	FY 2019	FY 2020	FY 2021	FY 2022	FY 2023	Percent Collected	Budget	FY 23 Variance	Total Variance	FY 23 Budget	FY 23 Variance	Total Variance
July	6.83%	1,021,893	1,709,699	721,591	688,361	1,180,151	13.88%	580,160	599,991	599,991	708,333	471,817	471,817
August	6.59%	1,094,910	1,626,878	678,770	621,431	1,477,386	17.38%	560,024	917,362	1,517,353	708,333	769,053	1,240,870
September	7.89%	1,247,587	1,594,768	1,170,188	669,516	1,420,424	16.71%	670,987	749,437	2,266,790	708,333	712,091	1,952,961
October	10.33%	1,305,380	2,296,981	1,806,775	733,755	1,832,154	21.55%	877,811	954,342	3,221,133	708,333	1,123,820	3,076,781
November	8.92%	1,479,583	1,724,595	1,102,858	944,700								
December	7.56%	1,400,629	1,802,303	543,590	858,551								
January	9.45%	1,507,523	1,737,649	1,457,143	839,002								
February	10.60%	1,366,128	1,797,479	1,801,333	1,092,275								
March	8.37%	1,434,928	1,693,941	885,536	945,710								
April	7.07%	1,414,567	1,200,194	581,268	940,150								
May	8.70%	1,514,123	1,328,466	973,485	1,159,826								
June	7.68%	1,518,495	1,015,043	554,668	1,259,090								
Total		16,305,748	19,527,995	12,277,206	10,752,368	5,910,115	69.53%	8,500,000	3,221,133	3,221,133	8,500,000	3,076,781	3,076,781
Month Average		1,358,812	1,627,333	1,023,100	896,031	1,477,529							

Sales Tax Actual to Budget



Sales Tax History

